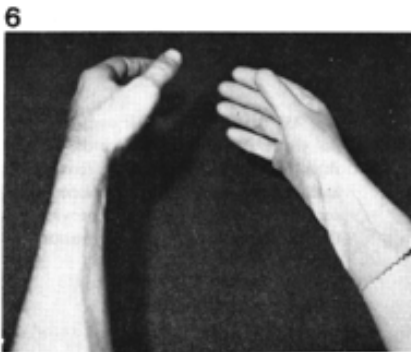
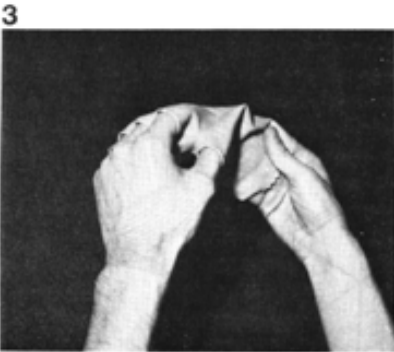
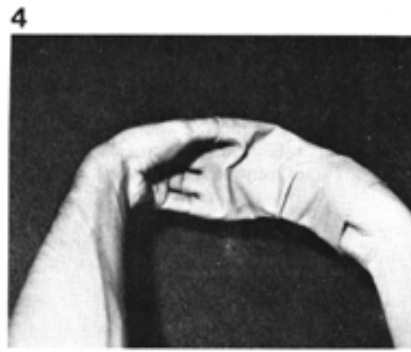
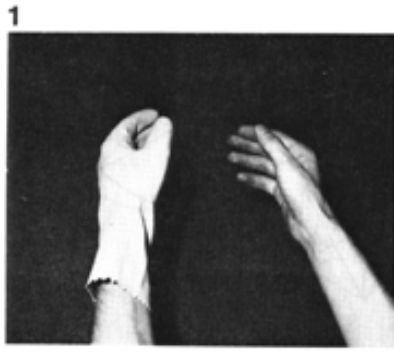


Fig. 453.02 Inside-Outing of Triangle: This illustrates the inside-outing of a triangle, which transformation is usually misidentified as "left vs. right" or "positive and negative" or as "existence vs. annihilation" in physics. The inside-outing is four-dimensional and often complex. The inside-outing of the rubber glove explains "annihilation" and demonstrates complex into-extroverting.



---

Copyright © 1997 Estate of R. Buckminster Fuller